

# KRIEG® | WORKFLEX®

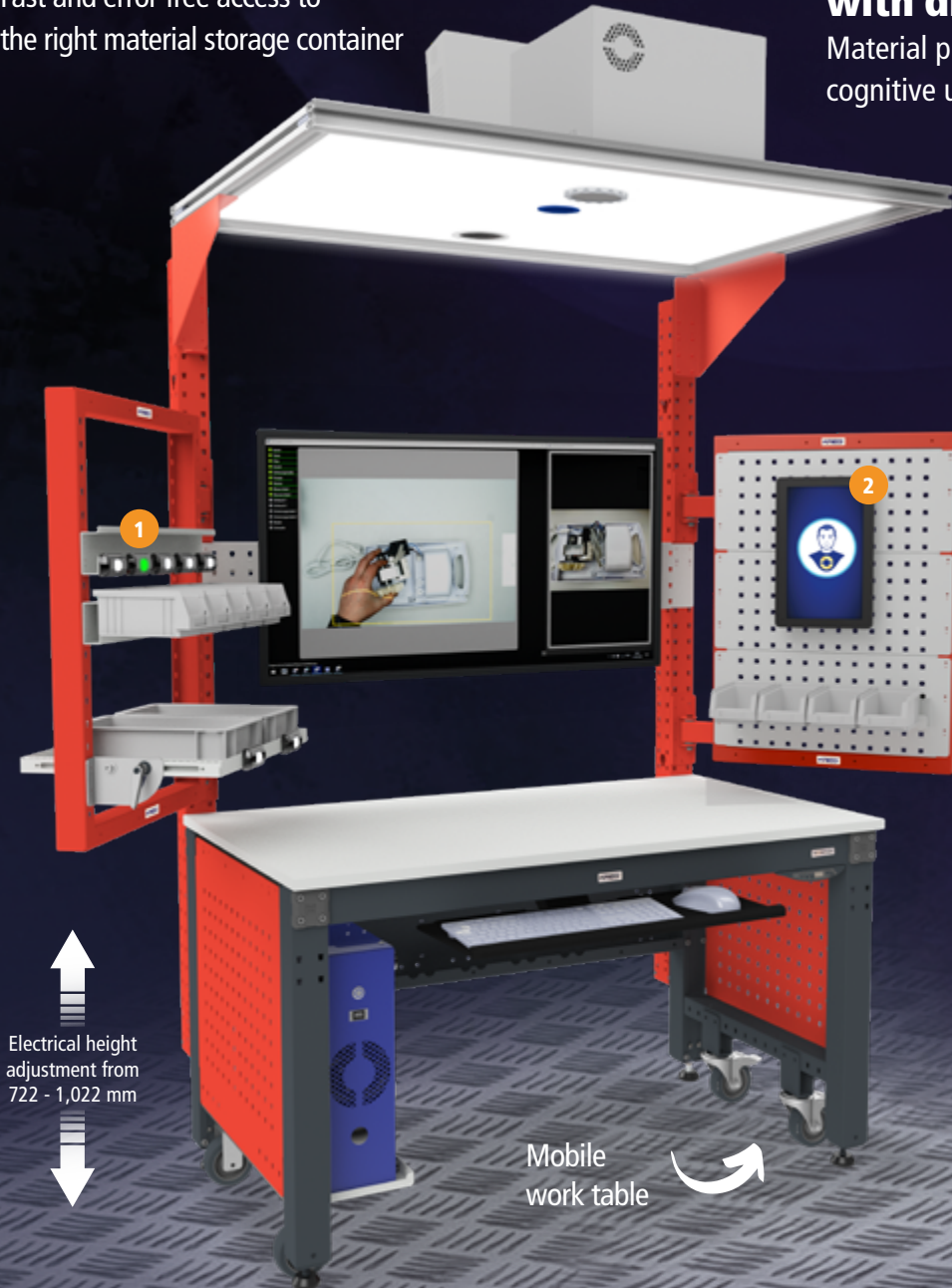
Healthy workplaces for more profitability

## 1 Pick-by-Light

Fast and error-free access to the right material storage container

## 2 Efficient working processes with digital work instructions

Material provision perfectly combined with cognitive user assist system



Electrical height adjustment from 722 - 1,022 mm

Mobile work table

Made in Germany by **KRIEG** 10 years warranty

### The benefits



- Increased efficiency through optimal best-point grip spaces in the sense of the Best Point character
- Cognitive operator assistance system "Smart Klaus" for more productivity
- Electric-powered ergonomic height adjustment
- Swivel box carrier leaf with Pick-by-Light system and perforated mounting panel
- Tool-less attachment of accessory components through plug-in system

# Ergonomic assembly workplace ERGOSMART



The ERGOSMART ergonomic workplace system delivers maximum efficiency enhancement due to optimum best-point grip spaces, combined with the "Smart Klaus" cognitive worker assist system. Materials are delivered via the containers mounted on the box rack rails, which ensure easier accessibility to materials with

encroaching on the work area. The pick-by-light system allows the worker to grab the required materials quickly and without errors. The worker receives digital work instructions explaining what materials are required for the next step, all the time accompanied by a continuous quality control.

Request free consultation: [beratung@workflex.de](mailto:beratung@workflex.de)

# Ergonomic assembly workplace ERGOSMART

Efficiency enhancement due to optimum best-point grip spaces and user assist system



**KRIEG** | **WORKFLEX**  
Healthy workplaces for more profitability

Further information:  
[www.workflex.de/messe-ergosmart](http://www.workflex.de/messe-ergosmart)

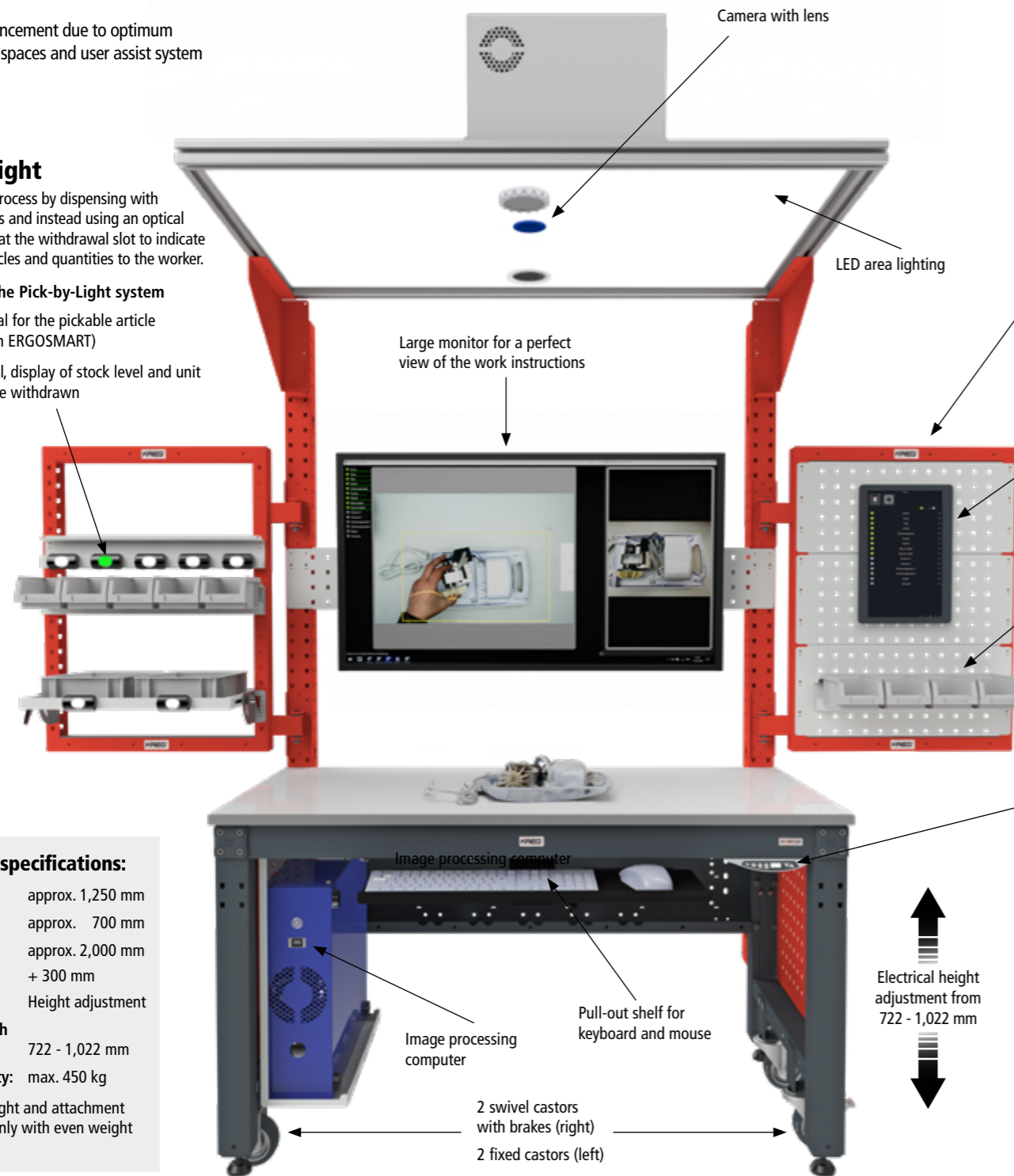


## Pick-by-Light

Simple picking process by dispensing with paper documents and instead using an optical signal deployed at the withdrawal slot to indicate the pickable articles and quantities to the worker.

### 2 versions of the Pick-by-Light system

- Optical signal for the pickable article (deployed on ERGOSMART)
- Optical signal, display of stock level and unit quantity to be withdrawn



### Technical specifications:

Width: approx. 1,250 mm  
Depth: approx. 700 mm  
Height: approx. 2,000 mm + 300 mm  
Height adjustment

Electric height adjustment: 722 - 1,022 mm

Load capacity: max. 450 kg

excl. tare weight and attachment weight and only with even weight distribution.

### The benefits

- Increased efficiency through optimal best-point grip spaces in the sense of the Best Point character
- Cognitive operator assistance system "Smart Klaus" for more productivity
- Swivel box carrier leaf on the gantry attachment with Pick-by-Light system and perforated mounting panel

### Tool-less push-fit accessory components throughout



#### Time-efficient assembly and reconfiguration with integrated antidrop system

Fast and individual positioning all necessary work equipment is used by Ensuring a health-friendly Posture during the work process.

### Side-mounted swivel box carrier leaf - optimum delivery of materials

- Tool-less push-mounted on gantry attachment
- Pivots sideways for best-point material access
- Incl. Pick-by-Light system for error-free picking

### LED touch screen

Simple and quick operation without a mouse and keyboard in the work instruction

### Tool-less push-fit design

All accessories come in tool-less push-fit design. This enables highly rapid reconfiguration and adaptation to fit with the work process.

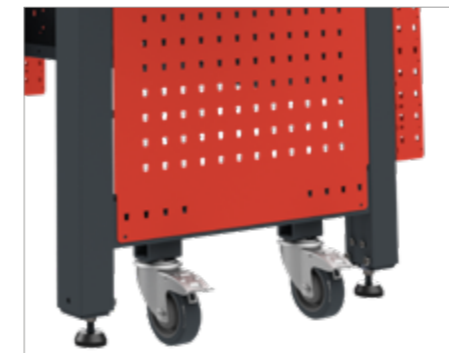
### Control panel for electric height adjustment

With memory function for 3 pre-set working heights and digital display screen for an exact height.



### Mobile work table with ergonomic, electric height adjustment

- The castors are also elevated when the work table surface is raised. The table rests stably and securely on its rigid legs.
- When fully lowered, the work table is placed on its castors, making it mobile so it can be moved as required.
- The work table is fitted with 2 lockable swivel castors, and 2 fixed castors for heavy loads.



## Digitalisation of manual work processes Assistance system "Smart Klaus"

The cognitive user assist system supports the digitalization of manual processes in industrial manufacturing. Combined with our efficient and ergonomic workstation systems, Smart Klaus ensures you achieve maximum levels of productivity. A digital work instruction system guides the worker step-by-step through the process, while continuous image recognition checks that every work step has been performed correctly.



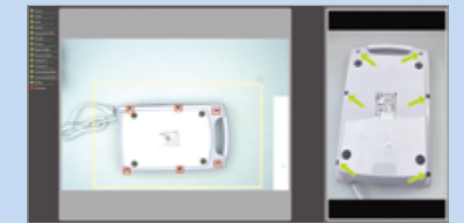
### Functionality:

One or more cameras are used to observe the work area. The captured images are continuously analyzed by the image processing software and compared with the set digital work instruction. In this way, Smart Klaus can recognise the progress of work and react according to the situation.

### Dashboard



### Work instruction display



### Suitable for every application

The "Smart Klaus" system has a modular design, making it configurable for every application. Pre-configured models are available for the following typical applications:



#### SK Receipt

For incoming goods inspections



#### SK Ident

For automated optical identification



#### SK Assembly

For manual assembly



#### SK THT

For THT assembly



#### SK Inspect

For automated optical inspection

### The benefits

- Easy creation of digital work instructions without programming knowledge
- Top quality through permanent quality control
- Less complaints and time expenditure for rework
- Reduced training effort for new employees and new products
- Higher productivity

Find out more about Smart Klaus in connection with our workplaces  
[www.workflex.de/der-schlaue-klaus](http://www.workflex.de/der-schlaue-klaus)

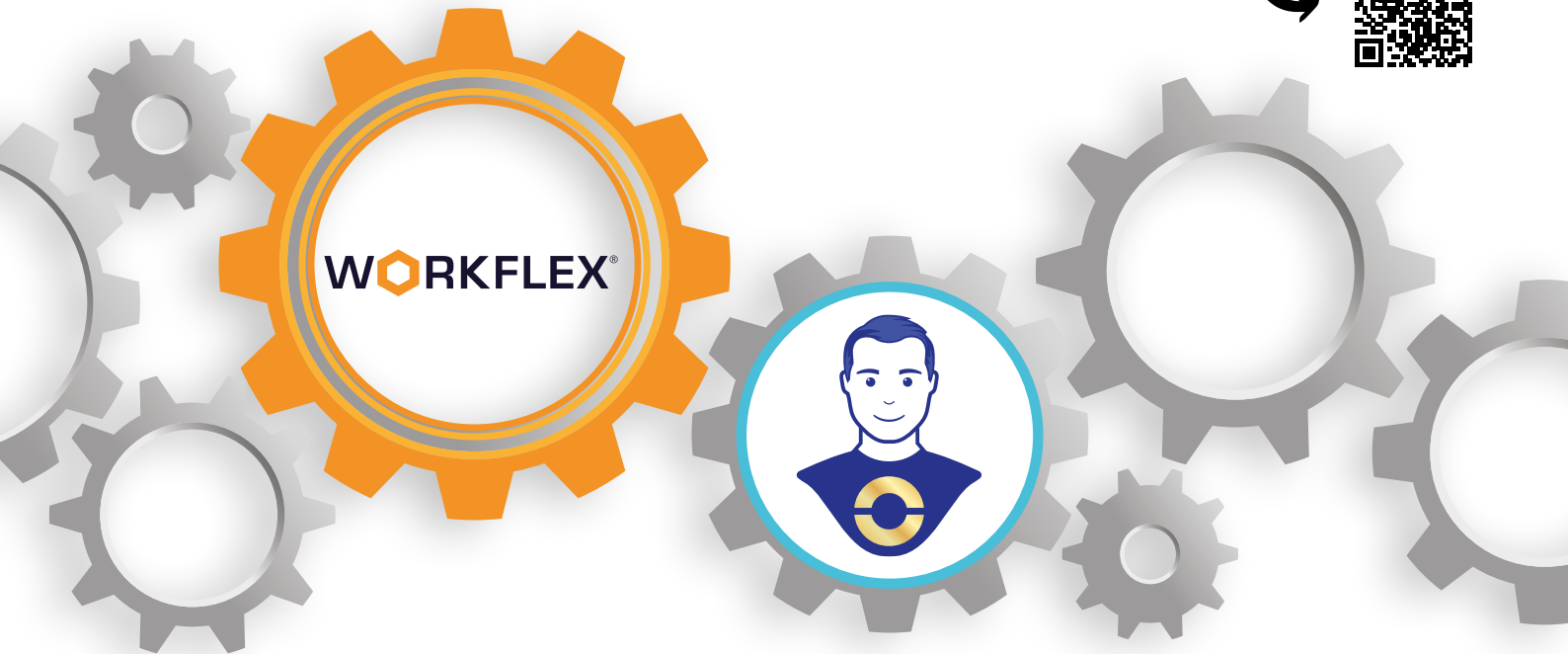


Efficiency enhancement due to optimum  
best-point grip spaces and user assist system

**KRIEG** | **WORKFLEX**  
Healthy workplaces for more profitability

# The perfect combination for more productivity

Find out more about Smart Klaus  
in connection with our workplaces  
[www.workflex.de/der-schlaue-klaus](http://www.workflex.de/der-schlaue-klaus)



## Try live demo now!

Take advantage of our complete advice package!

Our ergonomics coaches are on hand to advise you on our workstations and the "Smart Klaus" assist system

## WHY NOT CALL US TODAY?

Professional advice, on-site

**+49 (0) 7033 - 909 46 81**

## WE ARE MANUFACTURER

WHY NOT BENEFIT FROM OUR SPECIALIST KNOWLEDGE?

- + LARGE PRODUCTION SELECTION
- + MADE IN GERMANY
- + 10 YEAR MANUFACTURER'S WARRANTY
- + INDIVIDUAL CUSTOM-MADE SOLUTIONS



INNOVATION AWARD FOR  
**ERGONOMICS 2023**

Already awarded in 2021

E-Mail: [beratung@workflex.de](mailto:beratung@workflex.de)

[www.workflex.de](http://www.workflex.de)